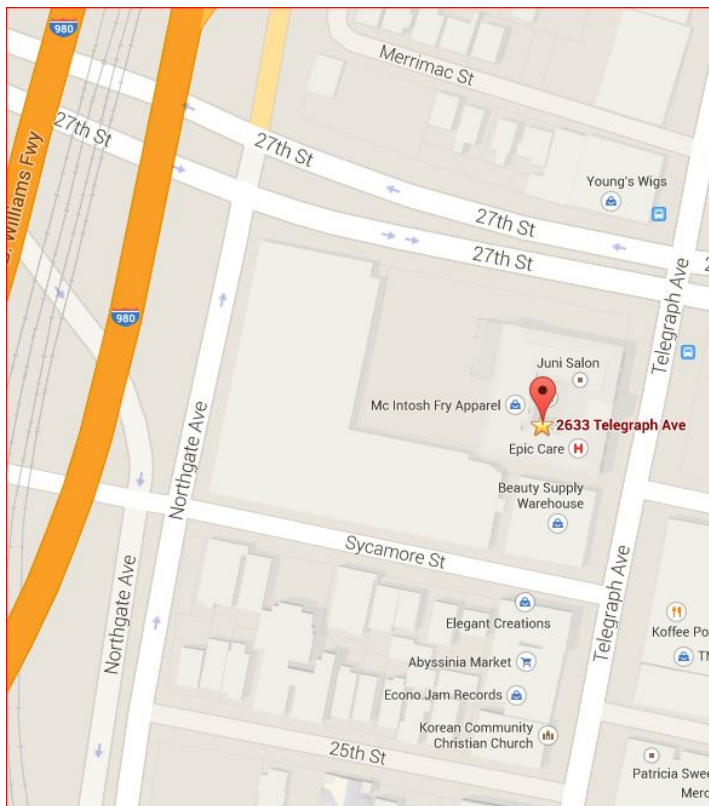
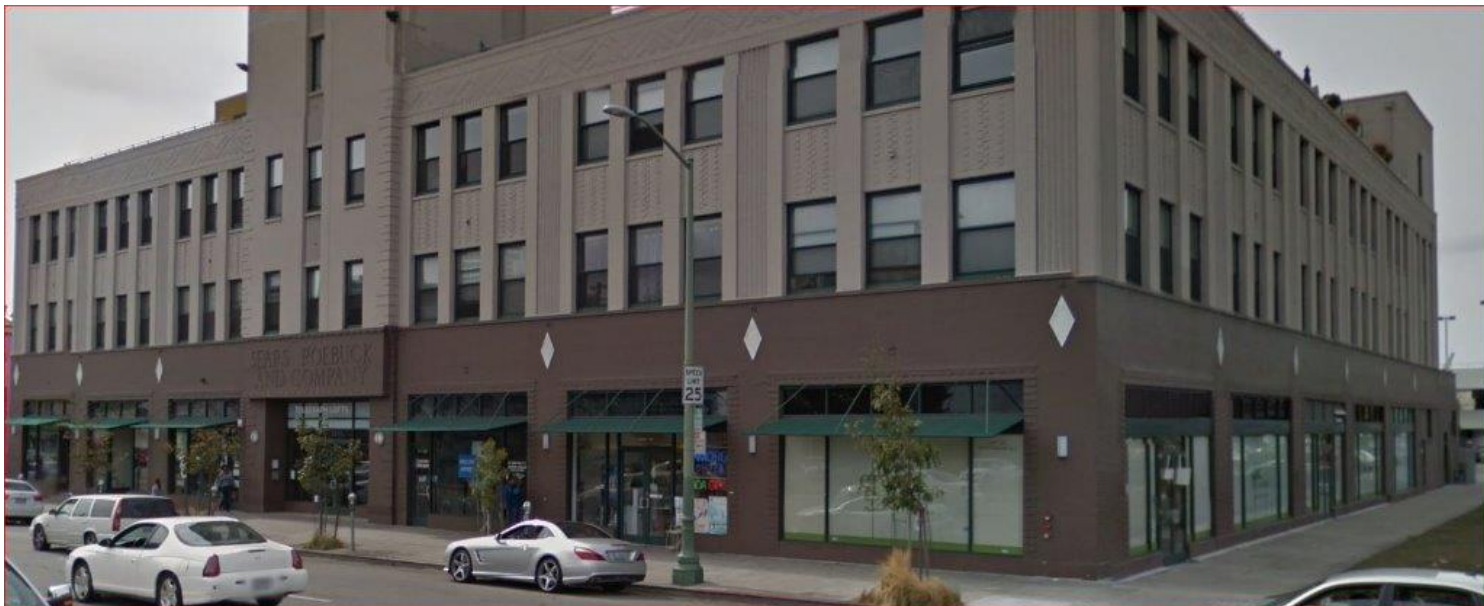


# GROUND FLOOR OFFICE SPACE FOR LEASE



## 2633 Telegraph Avenue, Suite 103 / 104, Oakland, CA 94612

- 2,756 sq. ft., currently used for medical services
- Zoned CC-2 (office, retail, restaurant)
- 7 Private Offices
- Open Bullpen
- Kitchen/Breakroom, ADA Restroom, Storage
- 6 On-Site Parking Spaces
- Excellent Uptown Location, First Friday Artwalk

## \$3.00 Per Sq. Ft. I.G.

**FOR FURTHER INFORMATION CONTACT**

**Barbara Kami 510.238.9111x12**

**BRE # 01169157**

**[barbara@ellwoodcommercial.com](mailto:barbara@ellwoodcommercial.com)**

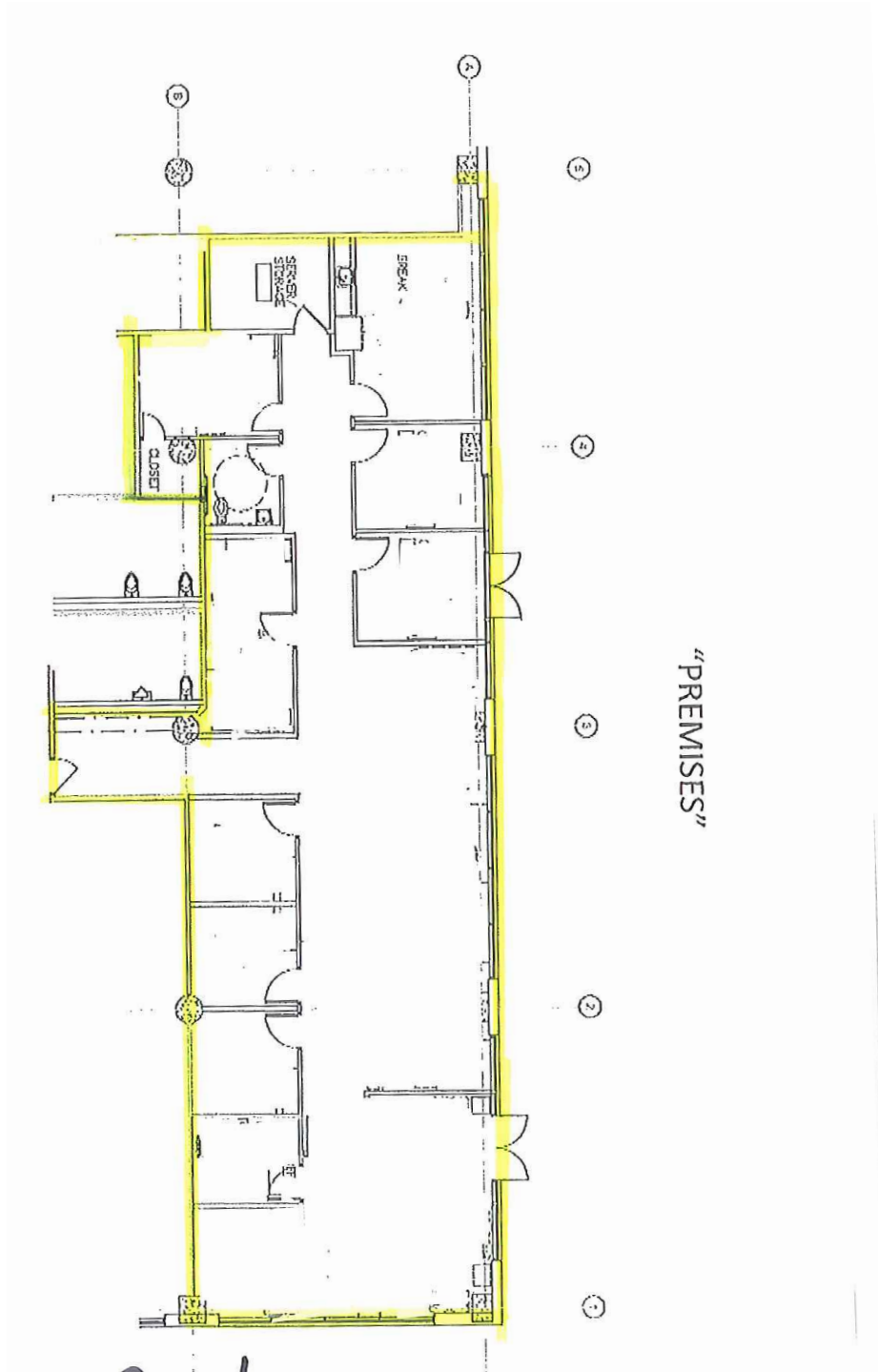
**1345 GRAND AVENUE #101, PIEDMONT, CA 94610**

**INFORMATION HEREIN DEEMED RELIABLE BUT NOT GUARANTEED**

**eLLWOOD**

COMMERCIAL REAL ESTATE

# GROUND FLOOR OFFICE SPACE FOR LEASE



**FOR FURTHER INFORMATION CONTACT**

**Barbara Kami 510.238.9111x12**

BRE # 01169157

**[barbara@ellwoodcommercial.com](mailto:barbara@ellwoodcommercial.com)**

**1345 GRAND AVENUE #101, PIEDMONT, CA 94610**

**INFORMATION HEREIN DEEMED RELIABLE BUT NOT GUARANTEED**

**eLLWOOD COMMERCIAL REAL ESTATE**